



AI-Driven Process Mining: How It Works and Why It Matters More Than Ever

For a long time, improving business processes has been a bit like trying to fix traffic without a live map. You know delays are happening. You know costs are creeping up. You hear complaints from teams and customers. But when it comes to seeing exactly where things break down, most organizations are still piecing together partial views, from reports, dashboards, and manual analysis. Process mining helped change that. It gave enterprises a way to reconstruct workflows using real system data instead of assumptions. But today, that's no longer

enough. Processes don't stand still; they evolve constantly: new systems, new rules, new exceptions. By the time a traditional process mining report is built, the process has already changed. That's why the conversation is shifting toward AI-driven process mining and more importantly, toward platforms like Re-vive that don't just analyze processes but continuously observe and improve them in real time.

From Process Mining to Process Intelligence

Traditional process mining answered an important question: "What happened?" It reconstructs workflows using event logs from systems like ERP and CRM, mapping out how processes actually run. That alone is powerful; it reveals bottlenecks, deviations, and inefficiencies that were previously invisible. But there's a gap. Knowing what happened doesn't automatically tell you:

- Why it happened
- What to fix first
- What impact a change will have
- How to act quickly

That gap is where most transformation efforts slow down. AI-driven process mining is meant to close that gap but only when it's paired with real-time visibility and context.

What AI-Driven Process Mining Really Means

There's a lot of noise around AI right now, so it's worth simplifying what actually matters.

At its core, AI-driven process mining combines traditional event log analysis with machine learning and AI models to:

- Detect inefficiencies automatically
- Identify patterns across large volumes of process data
- Predict where delays or risks will occur
- Recommend actions to improve outcomes

But here's the reality many organizations run into: AI is only as good as the data and context it's given. If your process view is static, incomplete, or outdated, even the most advanced AI will produce insights that are interesting, but not actionable. This is exactly where Re-vive takes a different approach.

How Re-vive Rethinks AI-Driven Process Mining

Re-vive doesn't start with dashboards or models. It starts with continuous process observability.

Instead of building a static representation of a process, Re-vive connects directly to enterprise systems and creates a living, real-time view of how work is actually flowing across every transaction, every variation, every exception. That changes everything. Because once you have a complete, real-time picture of your processes, AI becomes far more powerful and far more reliable.

From Static Analysis to Real-Time Understanding

Most process mining tools analyze historical data. Re-vive observes processes as they happen.

That means:

- Bottlenecks are detected as they form, not weeks later
- Rework loops become visible immediately
- Variations are captured in real time, not averaged out

This continuous visibility gives AI something it typically lacks: accurate, current context.

And with the right context, AI-driven process mining moves from hindsight to foresight.

Where AI Adds Real Value

With a real-time foundation in place, AI becomes more than just an analytical layer, it becomes a decision engine.

Predictive Process Intelligence:

Instead of manually digging through dashboards, teams can quickly understand:

- Where delays originate
- Which process paths are driving inefficiency
- What factors contribute most to cost or risk

Re-vive surfaces these insights directly, reducing the time from discovery to action.

Faster Root Cause Analysis:

AI models can identify patterns that signal future issues:

- Delays in order-to-cash cycles
- Compliance risks in approval workflows
- Inefficiencies in procurement or fulfillment

This allows organizations to act before problems escalate.

Natural Interaction with Data:

One of the biggest barriers to process mining has always been usability. Re-vive simplifies this by enabling users to interact with process data more intuitively, removing the need for deep technical expertise to extract value. The result is broader adoption across business teams, not just analysts.

Why This Matters for Enterprise Transformation

Most organizations don't struggle with a lack of ideas, they struggle with execution. Transformation initiatives often stall because:

- Insights take too long to generate
- Teams don't trust the data
- Changes feel risky without clear outcomes
- There's no continuous feedback loop

AI-driven process mining, done right, addresses all of these challenges.

With Re-vive:

- Insights are real-time and grounded in actual operations
- Decisions are backed by complete process visibility
- Improvements can be measured immediately
- Teams move from reactive to proactive

This shortens the distance between knowing and doing, which is where real ROI happens.

A Practical Example: Finance Operations

Take something like order-to-cash. In many organizations, delays in cash flow aren't caused by revenue, they're caused by process inefficiencies:

- Invoice errors
- Approval delays
- Rework loops
- System disconnects

Traditional tools might highlight these issues after the fact.

Re-vive shows:

- Exactly where the delay occurs
- How often it happens
- What it costs
- What to fix first

And with AI layered on top, teams can predict and prevent these delays, not just react to them.

The Shift from Insight to Action

The biggest change happening in process mining today isn't just better analytics, it's a shift in expectations.

Organizations no longer want:

- Static reports
- One-time analyses
- Insights that require interpretation

They want:

- Continuous visibility
- Clear recommendations
- Faster execution

This is what defines modern AI-driven process mining, and it's where Re-vive is focused.

Looking Ahead

As we move into the next phase of digital transformation, a few trends are becoming clear:

- AI will become more embedded in everyday operations
- Process intelligence will be expected in real time
- Decision-making will become more data-driven and automated
- The gap between insight and action will continue to shrink

But none of this works without one critical piece: Accurate, complete process visibility. That's the foundation everything else depends on. [AI-Driven Process Mining: How It Works and Why It Matters](#)

Final Thought

AI-driven process mining isn't just about smarter algorithms. It's about giving those algorithms the context they need to be useful.

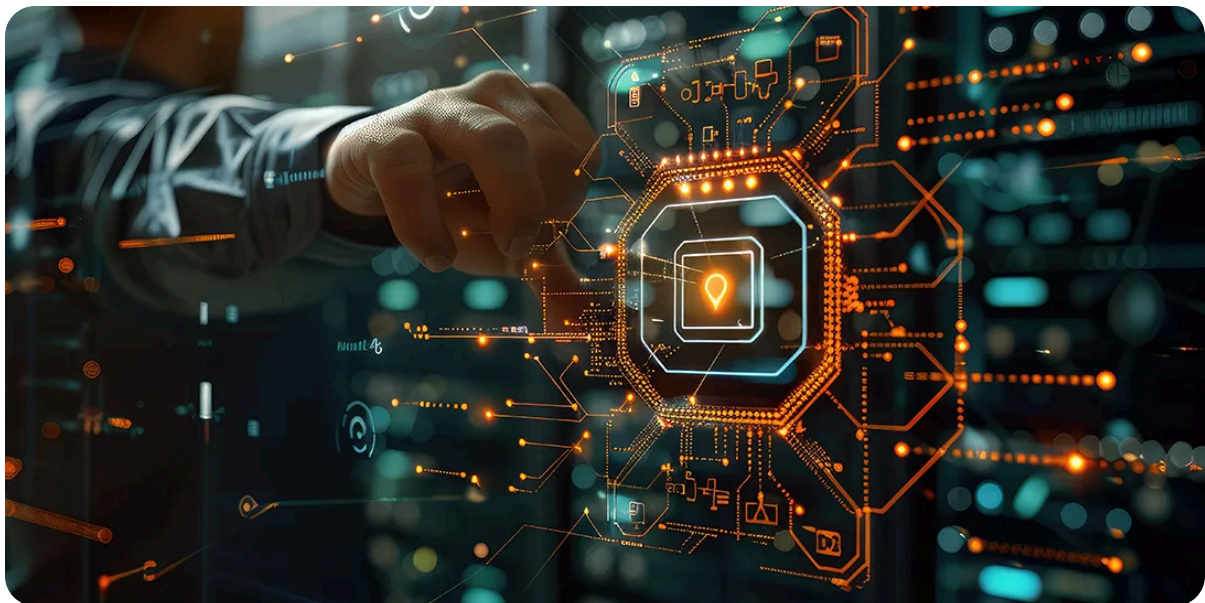
Re-vive does that by turning fragmented system data into a living, continuously updated view of your business processes.

From there, AI can do what it's meant to do:

- Surface what matters
- Predict what's next
- Help you act with confidence

Because at the end of the day, transformation doesn't come from seeing more data. It comes from understanding your processes and knowing exactly what to do next.

Latest Article



AI-Driven Process Mining: How It Works and Why It Matters More Than Ever



What is process mining. A complete Guide for modern enterprises



Five Predictions on How Generative AI Can Increase the Velocity of Business Process Transformation



Why Does AI Need Process Context to Deliver Real Business Value?



How Real-Time Process Observability Eliminates Rework, Bottlenecks, and Blind Spots



Join us on our journey of innovation.

[Request Demo](#)



Follow Us



Product

[ViVE Optum](#)

[ViVE Genie](#)

[ViVE Comply](#)

[ViVE Insights](#)

By Business Priorities

[Business Transformation](#)

[Risk and Compliance](#)

[Process Excellence](#)

Sustainability

By Process

B2B Onboarding

BFSI – Mortgage Loan Approval

FMCG – Order to Cash

Telecom - Order fulfillment

Health Care – Patient Journey

SDLC

By Industry

Banking and Finance

Consumer Goods

Manufacturing

Telecommunications

Company

About Us

Blogs

Demos

FAQ's

Careers

Events

Contact us

Documentation

Copyright 2026 Re-ViVE | Crafted with  by Till It Clicks